



# **TREND WORLD TECHNOLOGIES**

**(The World of Electronics Security, Surveillance, Fire, IT & Home Automation Solutions)**

## **COMPANY PROFILE**

---

### **TREND WORLD TECHNOLOGIES**

**(The World of Electronics Security, Surveillance, Fire, IT & Home Automation Solutions)**



# WHO WE ARE

Established in 2004, **Trend World Technologies** is recognized as a **leading distributor and system integrator of CCTV/Surveillance, Electronic Security, Telecom and Office Automation solutions.**

**We have a competent team of professionals who provide pre sales and post-sales support to our valuable clients for all of our solutions.** Our primary responsibility is to remember that satisfied customers are our greatest assets.

We believe that our customers should enjoy a productive, high quality and satisfying experience when dealing with our solutions. We are associated with industry leaders and recognised brands in each product line, to provide latest products and innovative solutions.

**Due to our committed services, we have been truly 'The Best Choice for Total Security and Surveillance Solutions for all of our valued customers.** Hence, this appreciation is received only through our supporting policies in providing the best solution for each and every requirement and after-sales services

The reputation we enjoy for the past several years indicates that our customers have accepted our products and service with complete satisfaction



# MISSION & VISION

## MISSION

Focus on our customers' challenges & requirements by providing excellent **solutions related to Electronic Security, Surveillance, Telecom, IT & Home Automation Solutions.**

## VISION

A leading, innovative, and creative organization focused to provide electronics solutions, in order to consistently create maximum value for the clients.






- ▶ **4 Times nominated for IFSEC India awards (yearly) - 2017, 2018, 2019 & 2022**
- ▶ **Certificate of recognition (for implementing innovative security solutions) by Hikvision India -2022**
- ▶ **Achievers awards for business leadership by Hikvision India - 2019**
- ▶ **Best upcountry system integrator by Panasonic-2010**
- ▶ **Selected among finalists at outstanding security performance awards (OPSA India 2020)**

# ACHIEVEMENTS



- 
- ▶ **Reg. Vendor for 45+ plants of public limited companies**
  - ▶ **Covering plants located in 15 states of India**
  - ▶ **Record AMC (annual maintenance contact) renewals**
  - ▶ **500+ SMEs in the clientele base**
  - ▶ **3000+ projects completed successfully**
  - ▶ **15000+ CCTV cameras supplied/installed**
  - ▶ **30000+ tickets resolved**
  - ▶ **Ambuja, ACC, SCL, UCWL, JKLC, JKCW, Nuvoco, Wonder...**
  - ▶ **500+ Long-range wireless Access Points supplied/installed**
  - ▶ **50000+ meters fiber supplied/installed**

# MILESTONES





# CCTV & SURVEILLANCE



**Line Crossing  
Detection**



**Boundary Loitering  
Detection**



**Face Detection  
Solution**



**Perimeter Intrusion  
Detection**



**Cloud Storage  
Solutions**



**HD & IP Based  
Camera**



**Camera Tampering  
Detection**



**Dome, Bullet, PTZ,  
360 Degree**

## **Enhanced Security**

- Crime Deterrence
- 24/7 Monitoring

## **Operational Efficiency**

- Automated Monitoring
- Resource Optimization

## **Real-Time Alerts and Quick Response**

- Immediate Notifications
- Rapid Incident Verification

## **Remote Access and Management**

- Flexible Monitoring
- Centralized Control

## **Evidence Collection and Legal Protection**

- Clear Video Evidence
- Liability Reduction

## **Safety and Compliance**

- Employee and Customer Safety
- Regulatory Compliance





# ADVANCE VIDEO ANALYTICS FOR SECURITY



**Crowd And Vehicle Movement**



**Thermal Cameras**



**Fire & Smoke Detection**



**Speed Violations Detection**



**Abundant Object / Missing Object**



**No PPE Kit Detection**



**Automatic Number Plate Recognition**



**Wrong Side Driving Detection**



**Stopped Vehicle And Illegal Parking**



**Human Pattern / Behaviour Recognition**

Video analytics for security uses advanced algorithms and AI to analyze video footage in real-time or post-event automatically. It enhances surveillance systems by detecting, classifying, and tracking objects and activities within a video stream. Key features include motion detection, facial recognition, license plate recognition, and behaviour analysis. It can identify suspicious activities, unauthorized access, or safety violations. Video analytics improves response times, reduces the need for human monitoring, and provides actionable insights, making it an essential tool for modern security operations in various environments such as public spaces, commercial buildings, and critical infrastructure.





# AUDIO/VIDEO AND HOME THEATERS



**Public Address Systems**



**Projector, Lifts and Screens**



**IP/Network/SIP/ Based Speakers**



**Interactive Displays**



**Home Theatres**



**Boardroom Solutions**



**Video Conferencing Solutions**



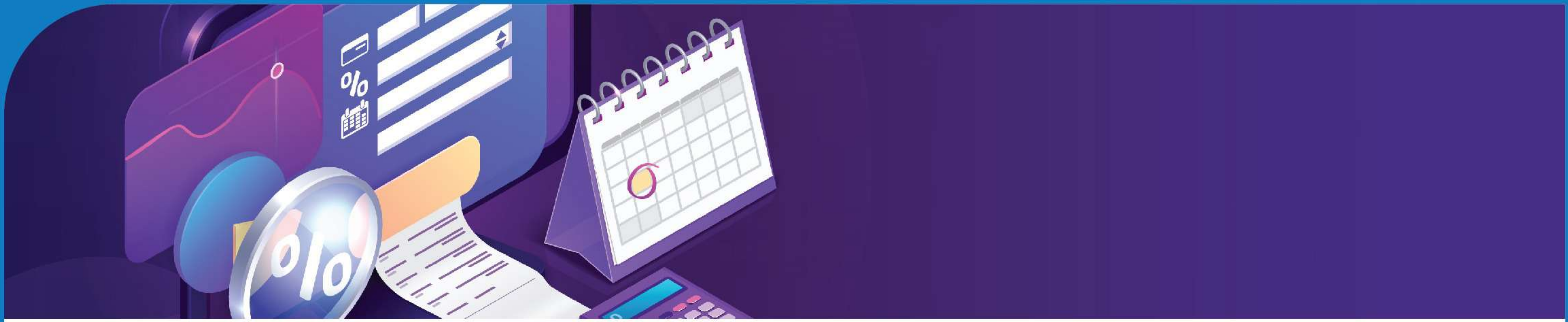
**Digital Classrooms / Training Rooms**

These audio/video products cater to diverse needs: Public Address Systems provide clear announcements in stadiums and schools. IP/Network/SIP Based Speakers enable flexible audio distribution in large venues and offices.

Home Theaters offer cinematic experiences at home for movies and gaming. Video Conferencing Solutions facilitate remote meetings and collaborations in business.

Projectors, Lifts, and Screens display presentations and media in boardrooms, theatres, and classrooms. Interactive Displays enhance learning and collaboration with touch-enabled interfaces.





# TIME & ATTENDANCE AND PAYROLL SOLUTIONS



**Biometric, Face, Finger, Card, Pin**



**Multi-Device & Canteen Management**



**Smart Payroll with Employee Self Service**



**Interactive Displays**



**Employee Monitoring**



**Cloud Based Attendance**



**Leave and Shift Management**

Integrated HR solutions optimize operations: Biometric Recognition (face, finger, card, PIN) enhances security and accuracy in employee identification. Smart Payroll with Employee Self-Service automates payroll processing, empowering employees to manage their data efficiently. Employee Monitoring ensures productivity tracking, while Leave and Shift Management simplifies scheduling and compliance. Multi device & Canteen Management integrates access control and meal plans. GPS/Geo Fencing Based Attendance tracks field staff, ensuring accurate attendance.- Cloud-Based Attendance centralizes data for remote access and real-time updates, enhancing efficiency and compliance management across organizational functions.





# INTRUSION / BURGLAR ALARM SYSTEM



**Wired and Wireless  
Alarm System**



**Various Sensors for  
Protection**



**Instant Call and  
App Notification**



**Vibration, Gas Leak  
Detectors**



**Smoke  
Detectors**



**Scheduling of System  
(Activate/Deactivate)**

Combining wired and wireless alarm systems with instant mobile call and app notifications offers robust security solutions. Various sensors like door, shutter, motion, and glass break detectors enhance protection. In contrast, vibration detectors, gas leaks, and smoke detectors ensure comprehensive safety. Scheduling system arm/disarm functionalities enable automated activation and deactivation based on predefined schedules or user commands. These systems are ideal for residential and commercial applications, providing real-time alerts, remote monitoring, and proactive security measures against intrusions, emergencies, and hazards. They offer peace of mind, rapid response capabilities, and enhanced property protection in various environments.





# BUILDING AND INDUSTRIAL SECURITY



**Perimeters Intrusion Detection System**



**Mobile Signal Boosters**



**Hand Held Metal Detectors (Hhmd)**



**Guard Monitoring System**



**Door Frame Metal Detectors (Dfmd)**



**Occupancy Sensors**



**Security Search Light (Dragon Light)**



**Baggage Scanners**



**Breath Analyzers (Alcohol Testers)**



**Fencing Solutions**



**Mobile/Cell Phone Jammers**



**Tower Searchlight**

These security technologies are essential across diverse environments: PIDS detect unauthorized access, while HHMD/DFMD ensure thorough screenings. Security searchlights and tower lights enhance low-light surveillance. Breath analyzers enforce workplace sobriety. Mobile jammers prevent unauthorized communication, and signal boosters enhance connectivity. Guard monitoring systems track patrols, and motion sensors optimize energy use.





# ENTRANCE CONTROL AND AUTOMATION



**Automatic Swing /  
Sliding Gates**



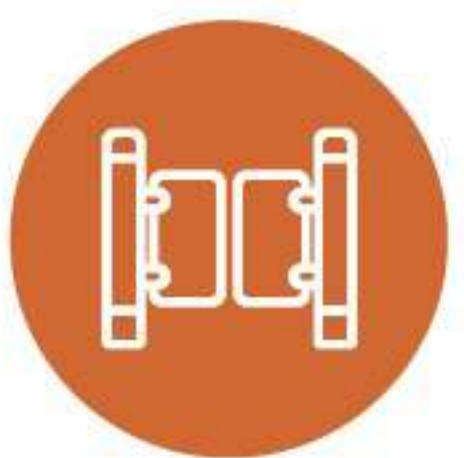
**Turnstile  
Gates**



**Boom  
Barriers**



**RFID  
Readers**



**Flap / Swing  
Barriers**



**Parking Management  
Solutions**

These automated access control solutions offer enhanced security and efficiency: Automatic Swing Gates/Sliding Gates and Boom Barriers manage vehicle access at entrances, ensuring controlled traffic flow and security. Flap/Swing Barriers and Turnstile Gates (Full Height & Half Height) provide pedestrian access control in areas requiring strict entry management, such as stadiums or offices. RFID Readers enable seamless entry for authorized personnel using RFID cards or tags, optimizing convenience and security. Parking Management Solutions integrates these technologies to regulate parking access, streamline operations, and enhance user experience with automated ticketing and space management. These systems collectively improve security, operational efficiency, and user convenience in various environments, from commercial buildings to public venues.





# ACCESS CONTROL AND ELECTRONIC LOCKS



**Biometric, Face, Finger, Card, Pin**



**Electronic Locks Integration**



**Person, Time, Schedule In/Out Entry**



**Elevator / Lift Access Control**



**Multi-doors Control**

These advanced access control systems integrate biometric (face, finger), card, PIN, Bluetooth, and mobile app authentication for secure entry. Electronic locks ensure physical security, while scheduling features manage access based on person, time, and schedule. Centralized multi-doors control via single software enhances operational efficiency, simplifying management across facilities. Elevator/lift access control restricts floor access, ensuring authorized movements only. These systems optimize security protocols, streamline operations, and provide real-time monitoring and control, enhancing overall safety and access management in diverse environments.

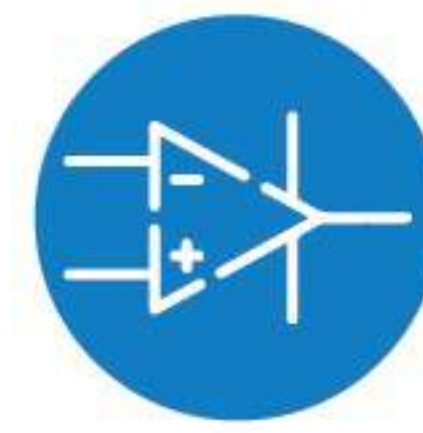




# IT AND NETWORKING SOLUTIONS



**Networking through Optical Fiber Cable**



**Active and Passive Components**



**Multi Location Connectivity**



**Firewall and Access Control**



**User / Internet Data Management**



**User Activity Control**



**Structured Cabling Service**



**Server Room/Data Center Solutions**



**Temperature & Water leakage Detection**



**Mesh Network for Uninterrupted Connectivity**



**Wireless Access Points for Short and Long Range Connectivity**

IT Networking Solutions are essential for companies as they enable efficient communication, data sharing, and collaboration across different departments and locations. They provide secure and fast connectivity for accessing resources, applications, and cloud services. Networking solutions also support remote work, allowing employees to stay connected and productive from anywhere. Additionally, they enhance cybersecurity by implementing firewalls, encryption, and monitoring tools, protecting company data from breaches and unauthorized access. Overall, networking solutions improve operational efficiency, streamline processes, and ensure business continuity.





# FIRE SAFETY AND FIRE SUPPRESSION SYSTEM



**Fire Extinguishers  
(ABC, CO2, DCP, Etc.)**



**Fire Hydrant and  
Suppression System**



**Fire Rated  
Doors**



**Emergency  
Exit Doors**



**Heat Detection  
through Cable**



**GSM Connectivity for  
Instant Calls In Case  
Of Fire**



**Fire Alarm System  
(Conventional and Addressable)**

Fire safety and suppression systems are critical for detecting, alerting, and controlling fires to protect lives and property. These systems include smoke, heat, and flame detectors for early detection, alarms to alert occupants, and fire suppression methods like sprinklers, foam, gas, or dry chemicals to extinguish fires. Portable extinguishers and fire hydrants provide additional fire control, while clear evacuation plans ensure safe exits. Together, these systems help prevent fire damage and ensure safety during emergencies.





A Trusted & Reliable Partner

## TREND WORLD TECHNOLOGIES

ISO 9001:2015 Certified

### JAIPUR :

115-116, Parshwanath  
Colony, Nirman Nagar,  
Jaipur - 302019 (Raj.)

### Contact :

+91-9828054040

### Email :

[info@twtglobal.in](mailto:info@twtglobal.in)

### BEAWAR :

6, K. Sudama Complex,  
Out Side Chang Gate,  
Beawar - 305901 (Raj.)

### Contact :

+91-93521 54040

### Website :

[www.twtglobal.in](http://www.twtglobal.in)